

www.indiratrade.com



MONDAY

CURRENCY COMMODITIES

**WEEKLY REPORT
15 OCT TO 19 OCT 2018**

EDGE



INDIRA SECURITIES PVT. LTD.



WEEKLY INDICES CHANGES

INDEX	CLOSE	PREV. CLOSE	Change (%)
SENSEX	34733.58	34376.99	1.04%
NIFTY	10472.5	10316.5	1.51%
DOW	25340	26447.1	-4.19%
NASDAQ	7496.89	7788.45	-3.74%
FTSE	6995.91	7318.54	-4.41%
NIKKEI	22389.5	23821.5	-6.01%
DAX	11523.8	12111.9	-4.86%
CAC	5095.98	5359.36	-4.91%

Market Round Up:

- **Stocks Jump Most Since April as Relief Rally Is On: Markets Wrap:** - U.S. stocks surged Friday, joining a global rally in equities after two days of market tumult as trade tensions between the U.S. and China seemed to ease, at least temporarily, with the countries planning to meet in November and the Treasury Department saying that China isn't manipulating its currency. Treasuries slipped, the dollar was steady and crude climbed above \$71 a barrel.
- **Forex - U.S. Dollar Rallies While Sterling Falls:** - The U.S. dollar rallied on Friday, as investors gained back confidence in the economy and a four-day equity selloff ended. The dollar had fallen this week as a selloff in equities and increasing bond yields put pressure on the greenback.
- **Cooling inflation data and solid bank quarterly results helped rally stocks and bolstered the dollar.**
- **Strong trade data from China also buoyed markets,** with the MSCI Asia Pacific Index rising from the lowest level since May 2017. China trade data showed exports rebounded, while imports remained robust, thanks to strong demand at home and abroad despite worsening relations with the U.S. That eased some concern about the impact of the trade war, which had contributed to the worst equity sell-off since February amid worries about the Federal Reserve's policy path.

RBI REFRANCE RATE

INDEX	CLOSE	PREV. CLOSE
USDINR	73.7967	73.5809
EURINR	85.5545	84.6975
JPYINR	65.6700	64.5900
GBPINR	97.6537	95.8877

FII FIGURES

DATE	FII FIGURES IN CRORE
15/10	-1805
16/10	-1242
17/10	-1096
18/10	-2869
19/10	-1322
NET	-8334

DII FIGURES

DATE	DII FIGURES IN CRORE
15/10	1973
16/10	1526
17/10	1892
18/10	1888
19/10	1287
NET	+8566



DOLLAR INDEX CHART



1. **RSI:** 55.24
2. **ADX:** Indicating Sideways signal
3. **Stochastic Oscillator:** indicating Sideways signal
4. **ATR:** 1.2629
5. **Moving averages:** Pair is trading above 50 and Below 100 Day simple moving averages..

USDINR TECHNICAL CHART (INDIAN RUPEE)



- 1) **RSI:** 84.84
- 2) **ADX:** Indicating positive signal
- 3) **Stochastic Oscillator:** indicating positive signal
- 4) **ATR:** 0.9451
- 5) **Moving averages :** Pair is trading above 50 and 100 Day simple moving averages..

Domestic	S2	S1	PIVOT	R1	R2
USDINR	71.98	72.37	72.71	73.11	73.45
EURINR	93.57	94.29	95.35	96.07	97.13
GBPINR	63.73	64.02	64.49	64.78	65.25
JPYINR	71.98	72.37	72.71	73.11	73.45

Global	S2	S1	PIVOT	R1	R2
DOLLAR INDEX	93.26	94.19	94.78	95.71	96.3
EURUSD	111.86	112.55	112.99	113.68	114.12
GBPUSD	1.29	1.3	1.31	1.31	1.33
USDJPY	1.15	1.15	1.17	1.18	1.19

CURRENCY	CLOSE PRICE	DAY	WEEK	MONTHLY	YEARLY
EURO	1.15458	-0.14%	0.50%	-0.67%	-2.10%
POUND	1.31032	-0.39%	0.12%	0.24%	-1.09%
AUSTRALIAN DOLLAR	0.71031	-0.20%	0.41%	-0.58%	-9.49%
NEWZEALAND DOLLAR	0.64972	-0.14%	0.83%	-1.16%	-9.35%
YEN	112.08	-0.10%	-1.03%	0.06%	-0.10%
YUAN	6.91474	-0.07%	-0.07%	0.67%	5.04%
SWISS FRANC	0.99073	-0.06%	-0.19%	2.94%	1.57%
CANADIAN DOLLAR	1.30255	0.03%	0.48%	-0.13%	4.07%
MEXICAN PESO	18.878	0.14%	-0.33%	0.20%	-0.81%
INDIAN RUPEE	73.55	-0.66%	-0.22%	2.19%	13.76%
BRAZILIAN REAL	3.78	-0.03%	-1.51%	-10.08%	19.30%
RUSSIAN RUBBLE	66.065	0.05%	-0.78%	-2.94%	15.35%
DOLLAR INDEX	95.36	0.15%	-0.42%	0.43%	2.19%
KORREAN WON	1132.65	0.21%	-0.09%	0.65%	0.48%
SOUTH AFRICAN RAND	14.5085	-0.04%	-2.22%	-2.69%	8.98%
SINGAPORE DOLLAR	1.37875	0.10%	-0.36%	0.51%	2.05%
HONGKONG DOLLAR	7.83786	0.04%	0.12%	-0.08%	0.40%

COMMODITIES

FUNDAMENTAL OF COMMODITIES

MAJOR COMMODITIES

MCX ENERGY WEEKLY

Commodity	S2	S1	Pivot	R1	R2
Crude oil- Sep	5169.3	5357.7	5513.3	5701.7	5857.3
Natural Gas-Sep	210.2	221.5	230.9	242.2	251.6

MCX BASE METAL WEEKLY

Commodity	S2	S1	Pivot	R1	R2
Copper-Nov	434.5	445.5	457.4	468.5	480.4
Zinc- Sep	186.3	192.1	196.2	202.1	206.2
Lead- Sep	143.7	145.8	148.8	150.9	153.9
Nickel- Sep	875.3	907.8	933.6	966.1	991.9

PRECIOUS METAL WEEKLY

Commodity	S2	S1	Pivot	R1	R2
Gold-Oct	29904.0	30497.0	30963.0	31556.0	32022.0
Silver-Dec	37591.3	38432.7	38896.3	39737.7	40201.3

International Commodity	S2	S1	Pivot	R1	R2	CMP	PREV CLOSE
Gold COMEX	\$1,183.40	\$1,194.70	\$1,203.50	\$1,214.80	\$1,223.60	\$1,228.00	\$1,206.00
SILVER COMEX	14.12	14.38	14.67	14.93	15.22	14.61	14.65
NYMEX CRUDE	70.78	72.56	74.73	76.51	78.68	70.97	74.34
BRENT CRUDE	80.29	82.23	84.48	86.42	88.67	80.26	84.16

Updates:

- Oil Prices Rise on Stockpile, Global Demand Concerns: - Crude prices were higher on Friday as an increase in stockpile data sparked concerns about a global oversupply as demand for oil wanes.
- Gold Prices Fall as Dollar Recovers: - Gold prices were lower on Friday as the greenback recovered from a two-week low as inflation pressures eased.
- Natural Gas Price Fundamental Daily Forecast – Strengthens Over \$3.239, Weakens Under \$3.208: -Natural gas futures are trading a little higher early Friday after yesterday's storage data related sell-off. Traders are also watching the weather and production for clues on how to play this market following a volatile hurricane-driven rally earlier in the week.



MAJOR COMMODITIES

Commodity Major	Price	Day	Weekly	Monthly	Yearly
Crude Oil	71.968	1.07%	-3.11%	4.46%	38.77%
Brent	81.5428	1.21%	-2.80%	4.52%	41.06%
Natural gas	3.209	1.36%	-1.83%	13.97%	8.87%
Gold	1220.9	0.31%	2.76%	1.66%	-5.69%
Silver	14.605	0.41%	1.86%	3.22%	-15.01%
Platinum	839.9	0.41%	2.74%	5.45%	-9.54%
Palladium	1068.22	0.21%	-0.60%	8.59%	9.87%
Copper	2.8062	0.27%	1.84%	6.54%	-12.98%
Lead	2068.5	2.66%	4.63%	2.24%	-18.14%
Aluminum	2041	1.04%	-5.92%	-1.11%	-4.34%
Tin	19125	-0.78%	0.79%	0.39%	-7.16%
Zinc	2646	1.53%	-0.30%	10.71%	-18.21%



MCX GOLD CHART



Commodity	S2	S1	Pivot	R1	R2
Gold	29904.0	30497.0	30963.0	31556.0	32022.0

GOLD TECHNICAL INDICATOR	
RSI(14)	BUY
STOCH(9,6)	BUY
STOCHRSI(14)	SELL
MACD(12,26)	BUY
ADX(14)	SELL
Williams %R	BUY
CCI(14)	BUY
Highs/Lows(14)	BUY
Ultimate Oscillator	BUY
ROC	BUY
BUY	7
SELL	2
NEUTRAL	0
SUMMARY	STRONG BULLISH

GOLD INTERNATIONAL CHART



Commodity	S2	S1	Pivot	R1	R2
Gold	\$1,183.4	\$1,194.7	\$1,203.5	\$1,214.8	\$1,223.6

GOLD INTERNATIONAL TECHNICAL INDICATOR	
RSI(14)	SELL
STOCH(9,6)	SELL
STOCHRSI(14)	SELL
MACD(12,26)	BUY
ADX(14)	BUY
Williams %R	NETURAL
CCI(14)	SELL
Highs/Lows(14)	BUY
Ultimate Oscillator	SELL
ROC	SELL
BUY	3
SELL	6
NEUTRAL	1
SUMMARY	MILD BEARISH



MCX SILVER CHART



Commodity	S2	S1	Pivot	R1	R2
Silver	37591.3	38432.7	38896.3	39737.7	40201.3

SILVER TECHNICAL INDICATOR

RSI(14)	BUY
STOCH(9,6)	BUY
STOCHRSI(14)	BUY
MACD(12,26)	BUY
ADX(14)	SELL
Williams %R	NETURAL
CCI(14)	BUY
Highs/Lows(14)	BUY
Ultimate Oscillator	BUY
ROC	BUY
BUY	7
SELL	1
NEUTRAL	1
SUMMARY	STRONG BULLISH

SILVER INTERNATIONAL CHART



Commodity	S2	S1	Pivot	R1	R2
Silver	\$14.1	\$14.4	\$14.7	\$14.9	\$15.2

SILVER INTERNATIONAL TECHNICAL INDICATOR

RSI(14)	SELL
STOCH(9,6)	BUY
STOCHRSI(14)	BUY
MACD(12,26)	SELL
ADX(14)	SELL
Williams %R	NETURAL
CCI(14)	SELL
Highs/Lows(14)	BUY
Ultimate Oscillator	BUY
ROC	SELL
BUY	4
SELL	5
NEUTRAL	1
SUMMARY	MILD BEARISH



MCX COPPER CHART



Commodity	S2	S1	Pivot	R1	R2
Copper	434.5	445.5	457.4	468.5	480.4

COPPER TECHNICAL INDICATOR

RSI(14)	BUY
STOCH(9,6)	BUY
STOCHRSI(14)	SELL
MACD(12,26)	BUY
ADX(14)	SELL
Williams %R	NETURAL
CCI(14)	BUY
Highs/Lows(14)	BUY
Ultimate Oscillator	BUY
ROC	BUY
BUY	6
SELL	2
NEUTRAL	1
SUMMARY	MILD BULLISH

COPPER INTERNATIONAL CHART



Commodity	S2	S1	Pivot	R1	R2
Copper	\$2.7	\$2.7	\$2.8	\$2.8	\$2.9

COPPER INTERNATIONAL TECHNICAL INDICATOR

RSI(14)	SELL
STOCH(9,6)	BUY
STOCHRSI(14)	SELL
MACD(12,26)	BUY
ADX(14)	SELL
Williams %R	NETURAL
CCI(14)	BUY
Highs/Lows(14)	BUY
Ultimate Oscillator	BUY
ROC	BUY
BUY	5
SELL	3
NEUTRAL	1
SUMMARY	NETURAL



MCX CRUDE CHART



Commodity	S2	S1	Pivot	R1	R2
Crude oil	5169.3	5357.7	5513.3	5701.7	5857.3

BRENT CRUDE OIL TECHNICAL INDICATOR	
RSI(14)	BUY
STOCH(9,6)	BUY
STOCHRSI(14)	BUY
M ACD(12,26)	BUY
ADX(14)	BUY
Williams %R	BUY
CCI(14)	BUY
Highs/Lows(14)	BUY
Ultimate Oscillator	BUY
ROC	BUY
BUY	9
SELL	0
NEUTRAL	0
SUMMARY	STRONG BULLISH

NYMEX CRUDE CHART



Commodity	S2	S1	Pivot	R1	R2
Crude oil	\$70.8	\$72.6	\$74.7	\$76.5	\$78.7

CRUDE.OILNYM TECHNICAL INDICATOR	
RSI(14)	BUY
STOCH(9,6)	BUY
STOCHRSI(14)	BUY
M ACD(12,26)	BUY
ADX(14)	SELL
Williams %R	NETURAL
CCI(14)	BUY
Highs/Lows(14)	BUY
Ultimate Oscillator	BUY
ROC	BUY
BUY	7
SELL	1
NEUTRAL	1
SUMMARY	STRONG BULLISH



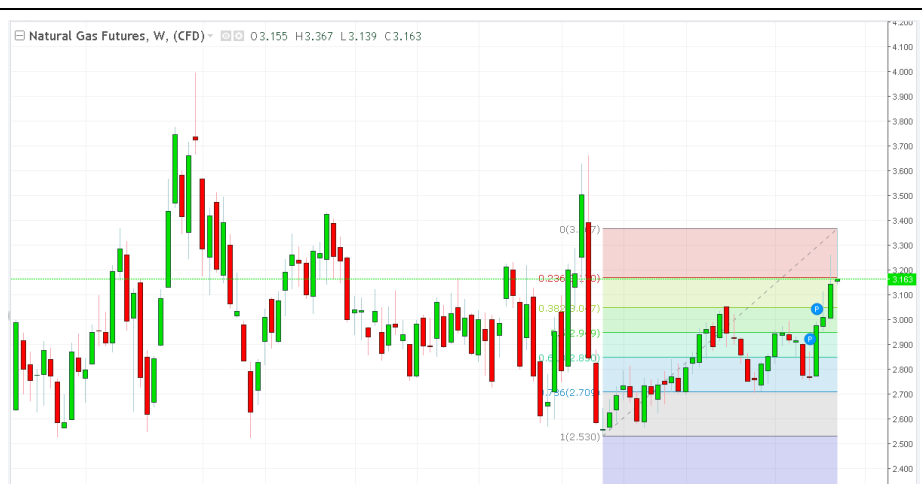
MCX NATURAL GAS



Commodity	S2	S1	Pivot	R1	R2
Natural Gas	210.2	221.5	230.9	242.2	251.6

NATURALGAS TECHNICAL INDICATOR	
RSI(14)	BUY
STOCH(9,6)	BUY
STOCHRSI(14)	BUY
MACD(12,26)	BUY
ADX(14)	SELL
Williams %R	BUY
CCI(14)	BUY
Highs/Lows(14)	BUY
Ultimate Oscillator	BUY
ROC	BUY
BUY	8
SELL	1
NEUTRAL	0
SUMMARY	STRONG BULLISH

NATURAL GAS INTERNATIONAL



Commodity	S2	S1	Pivot	R1	R2
Natural Gas	\$2.9	\$3.0	\$3.1	\$3.3	\$3.4

NATURAL GAS INTER. TECHNICAL INDICATOR	
RSI(14)	BUY
STOCH(9,6)	BUY
STOCHRSI(14)	BUY
MACD(12,26)	BUY
ADX(14)	SELL
Williams %R	BUY
CCI(14)	BUY
Highs/Lows(14)	BUY
Ultimate Oscillator	BUY
ROC	BUY
BUY	8
SELL	1
NEUTRAL	0
SUMMARY	STRONG BULLISH

IMP ECONOMIC DATA TO WATCH FOR THE WEEK

DATE	TIME	CURRENCY	ECONOMIC DATA	FORECAST	PREVIOUS
MonOct 15	6:00pm	USD	Core Retail Sales m/m	0.40%	0.30%
		USD	Retail Sales m/m	0.70%	0.10%
TueOct 16	Tentative	USD	Treasury Currency Report		
	7:00am	CNY	CPI y/y	2.50%	2.30%
	2:00pm	GBP	Average Earnings Index 3m/y	2.60%	2.60%
		GBP	Unemployment Rate	4.00%	4.00%
	6:45pm	GBP	MPC Member Cunliffe Speaks		
WedOct 17	1:45am	USD	FOMC Member Daly Speaks		
	2:00pm	GBP	CPI y/y	2.60%	2.70%
		GBP	PPI Input m/m	0.90%	0.50%
		GBP	RPI y/y	3.50%	3.50%
	6:00pm	USD	Building Permits	1.28M	1.25M
		USD	Housing Starts	1.21M	1.28M
	8:00pm	USD	Crude Oil Inventories		6.0M
	9:40pm	USD	FOMC Member Brainard Speaks		
	10:00pm	EUR	German Buba President Weidmann Speaks		
	10:30pm	GBP	MPC Member Broadbent Speaks		
	11:30pm	USD	FOMC Meeting Minutes		
ThuOct 18	Tentative	JPY	BOJ Gov Kuroda Speaks		
	2:00pm	GBP	Retail Sales m/m	-0.30%	0.30%
	All Day	EUR	EU Economic Summit		
	6:00pm	USD	Philly Fed Manufacturing Index	21	22.9
	9:00pm	USD	FOMC Member Quarles Speaks		
FriOct 19	7:30am	CNY	GDP q/y	6.60%	6.70%
		CNY	Fixed Asset Investment ytd/y	5.30%	5.30%
		CNY	Industrial Production y/y	6.00%	6.10%
		CNY	NBS Press Conference		
	12:00pm	JPY	BOJ Gov Kuroda Speaks		
	2:00pm	GBP	Public Sector Net Borrowing	4.6B	5.9B
	9:00pm	GBP	BOE Gov Carney Speaks		
	9:30pm	USD	FOMC Member Bostic Speaks		



204 Amardarshan Building 3rd floor Saket Nagar , Indore-452018

Call: 0731-4797170-173 Mob: +91-9303172345 / Toll Free: 18001030059 / SMS: <INDIRA> to 56070

DISCLAIMER

This report is for private circulation within the Indira Group. This report is strictly confidential and for information of the selected recipient only and may not be altered in any way, transmitted to, copied or distributed, in part or in whole, to any other person or to the media or reproduced in any form. This report should not be construed as an offer or solicitation to buy or sell any securities or any interest in securities. It does not constitute a personal recommendation or take into account the particular investment objectives, financial situations, or any such factor. The information, opinions estimates and forecasts contained here have been obtained from, or are based upon, sources we believe to be reliable, but no representation of warranty, express or implied, is made by us to their accuracy or completeness. Opinions expressed are our current opinions as of our current opinions as of the data appearing on this material only and are subject to change without notice.

Design by: JUGGERNAUT DESIGNERS 98260 79355